



**UNIVERSITY  
OF UDINE**  
hic sunt futura



The **Liquid biopsy**  
Research Team

# La biopsia liquida

Presente e futuro verso una nuova diagnostica personalizzata

**Lorenzo Gerratana, MD**

Department of Medical Oncology (OMP) - IRCCS CRO Aviano National Cancer Institute, Italy

Department of Medicine (DAME) - The University of Udine, Italy



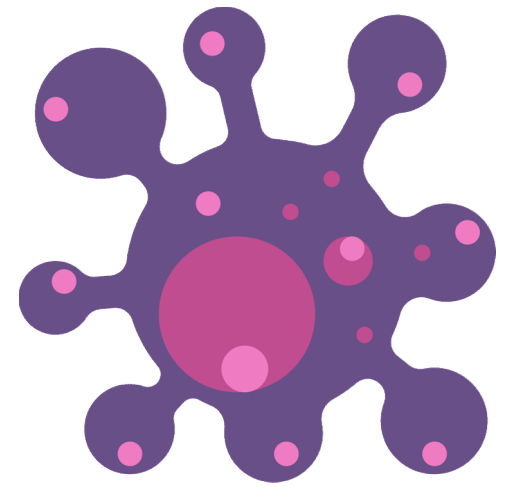
**L'ARTE DELLA CURA PERSONALIZZATA**



**Cellule**



**DNA**



**Vescicole**

# Tanto tempo fa in una galassia lontana lontana

Non sempre le novità sono nuove

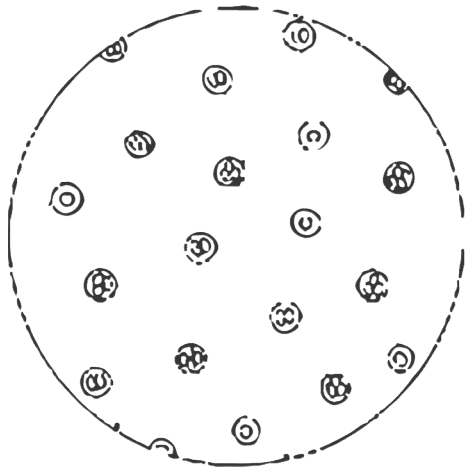


Fig. I.

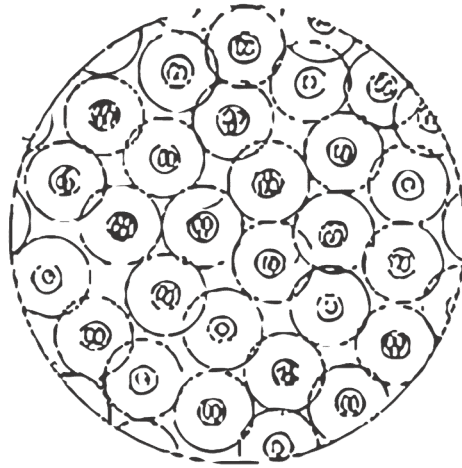


Fig. II.

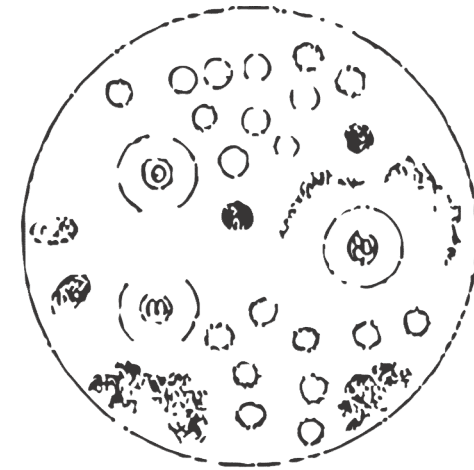
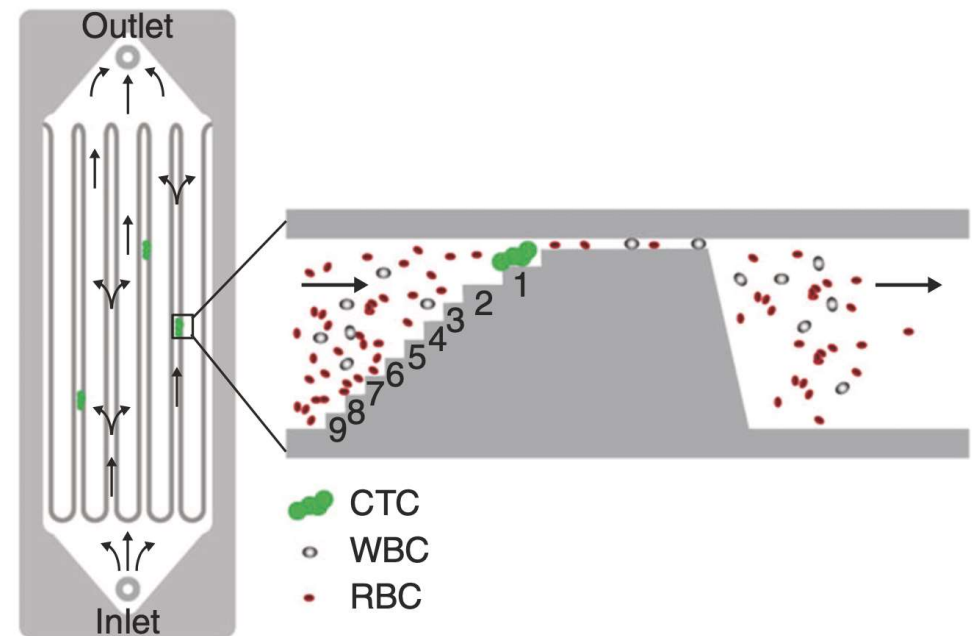
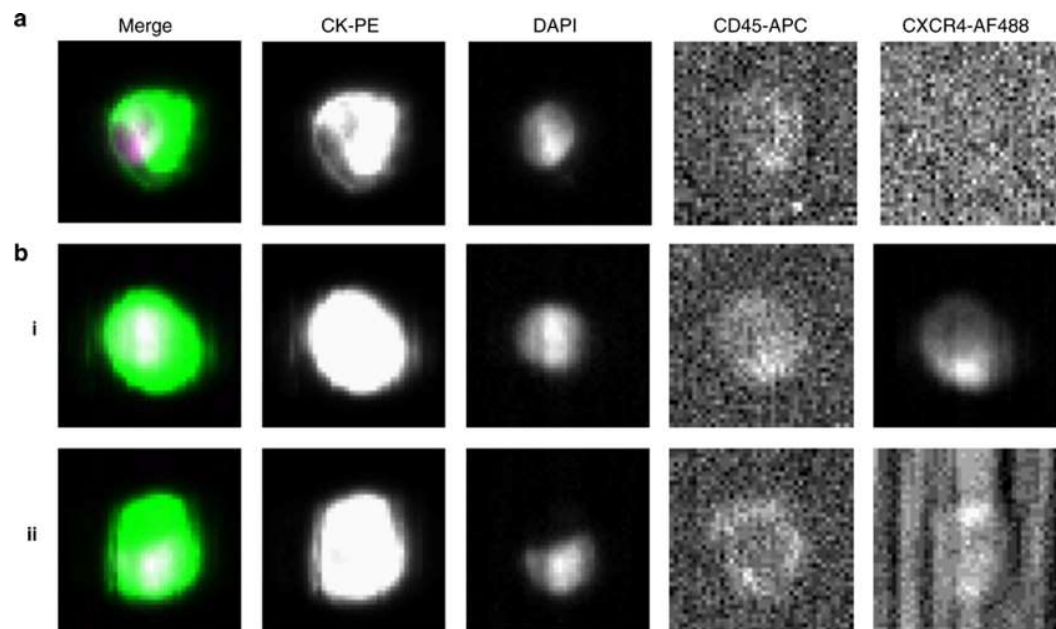


Fig. III

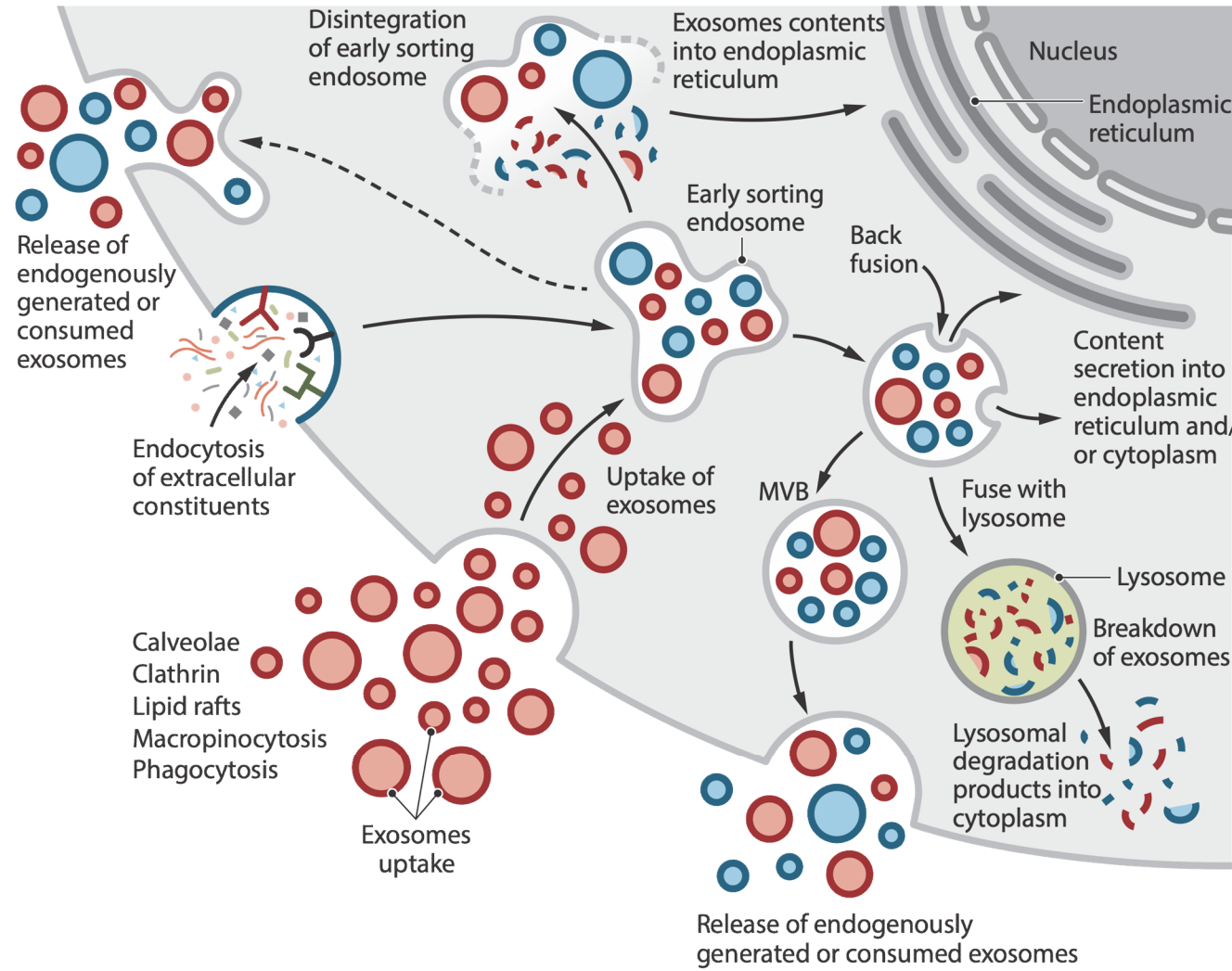
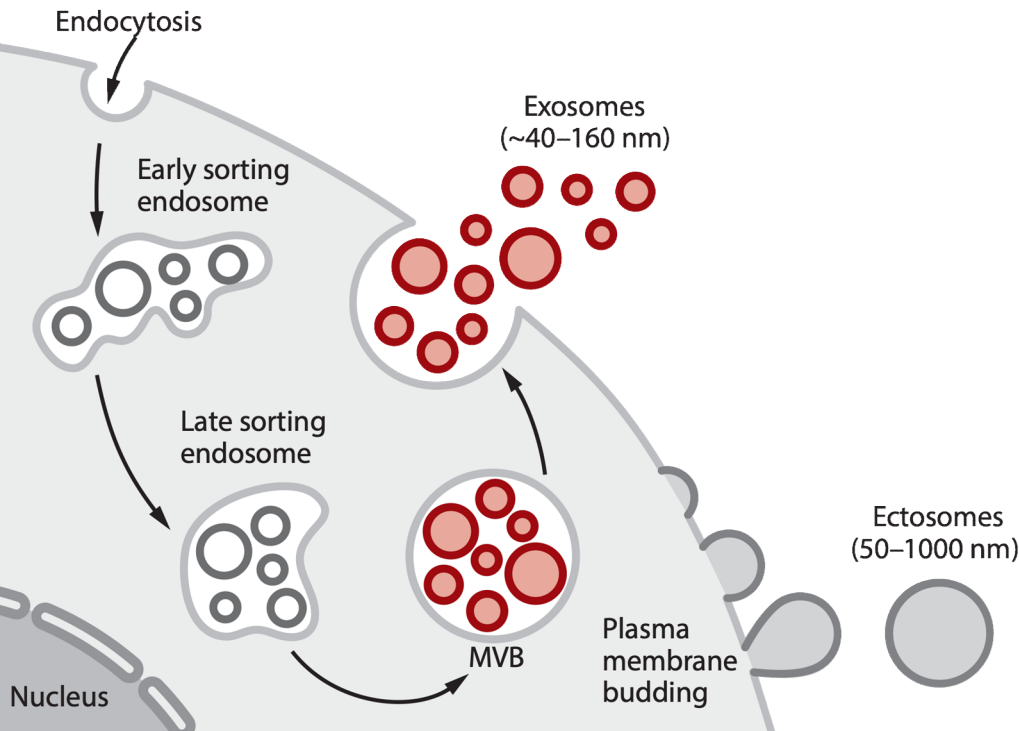
# Le cellule tumorali circolanti

La prima biopsia liquida moderna



# Le microvescicole

Il messaggio nella bottiglia

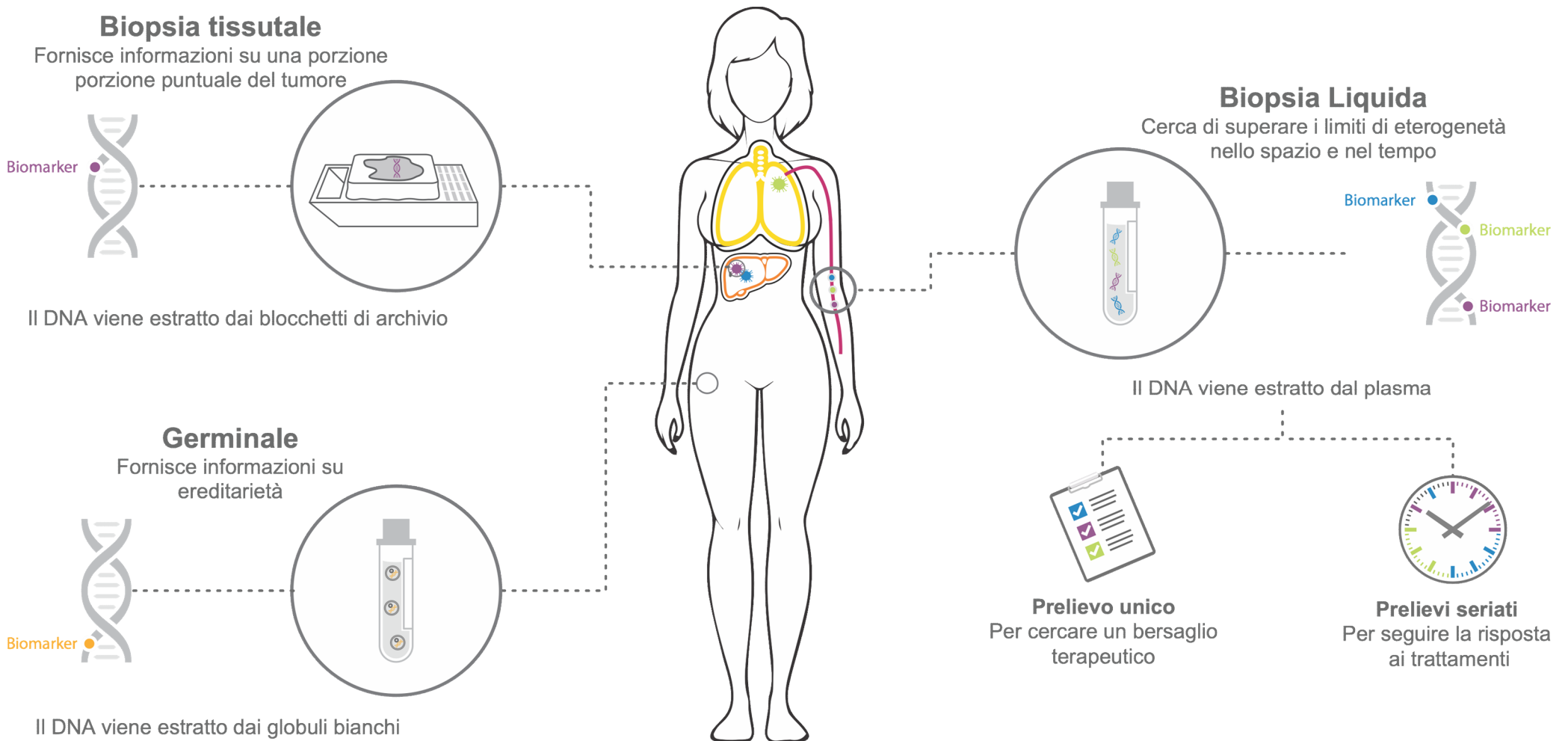




**DNA circolante**

# Per ogni risposta serve una domanda giusta

DNA dal tessuto, dal sangue e dai globuli bianchi

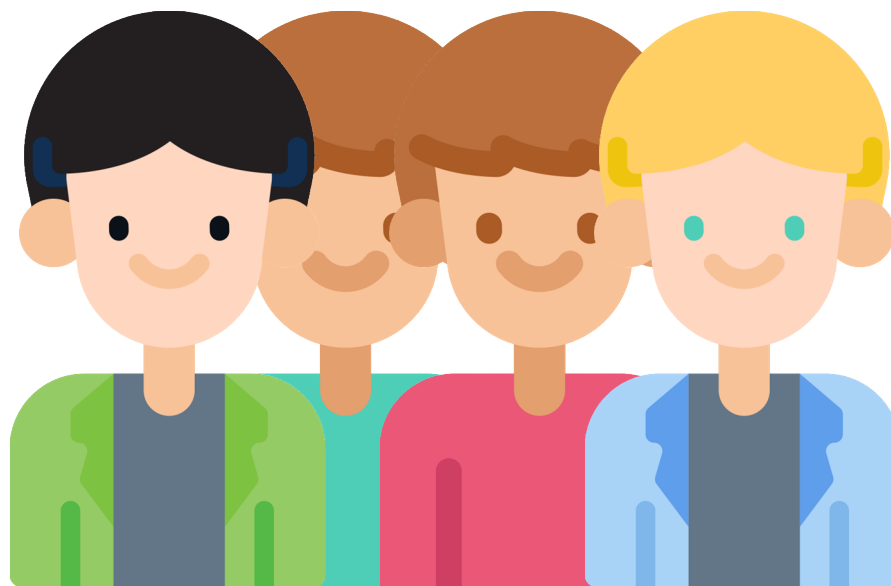


Perché la **biopsia liquida**?



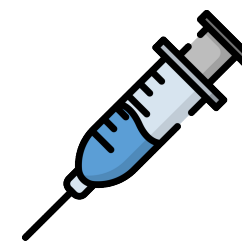
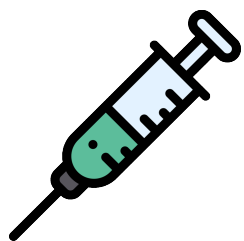
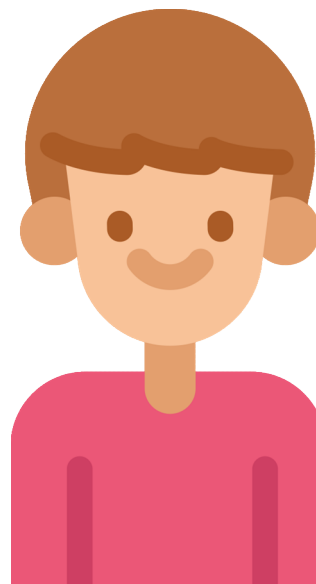
# Perché la biopsia liquida?

Una malattia un farmaco



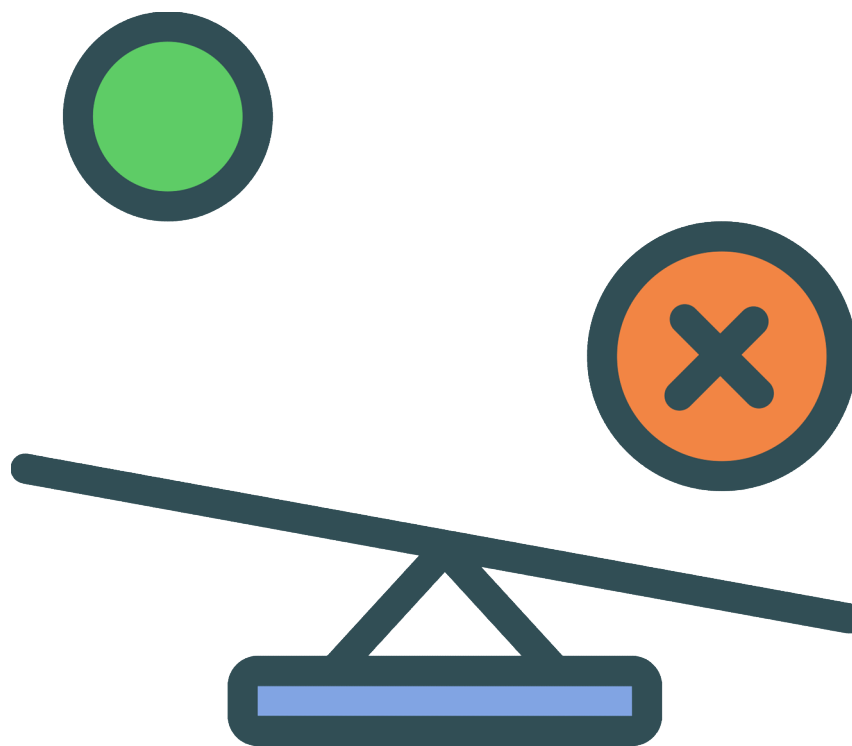
# Perché la biopsia liquida?

Tante persone con malattie molecolarmente diverse che richiedono un farmaco diverso



# Non solo trattamento

Prognosi e Monitoraggio





# Quale possibile applicazione?

Quale possibile applicazione?



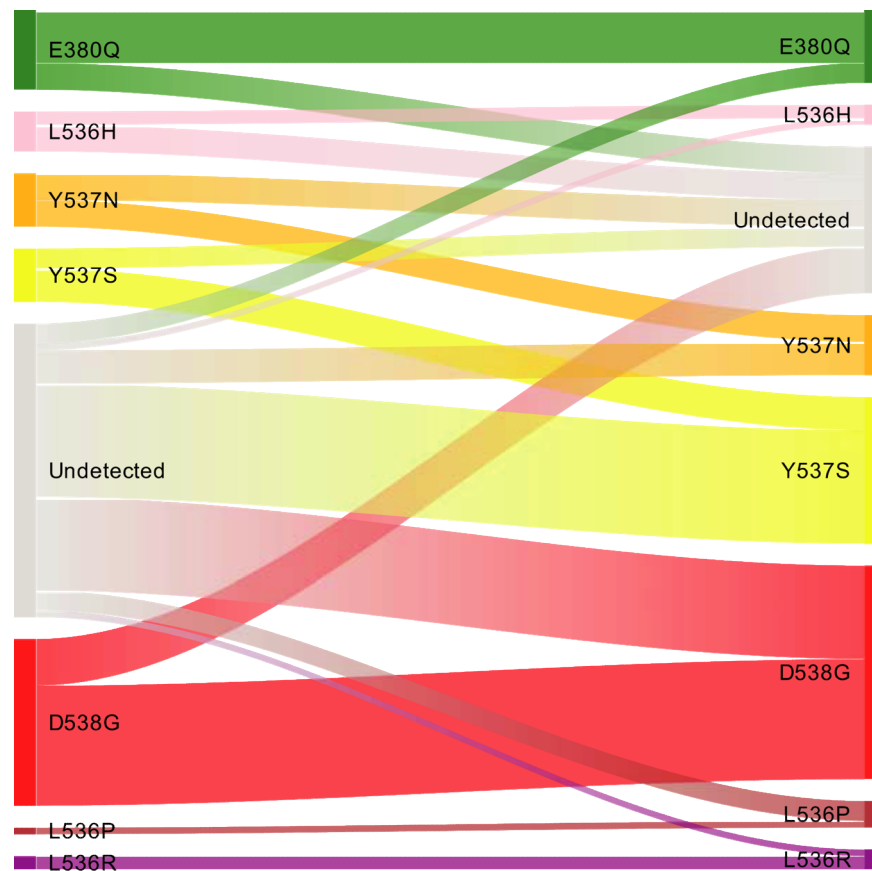
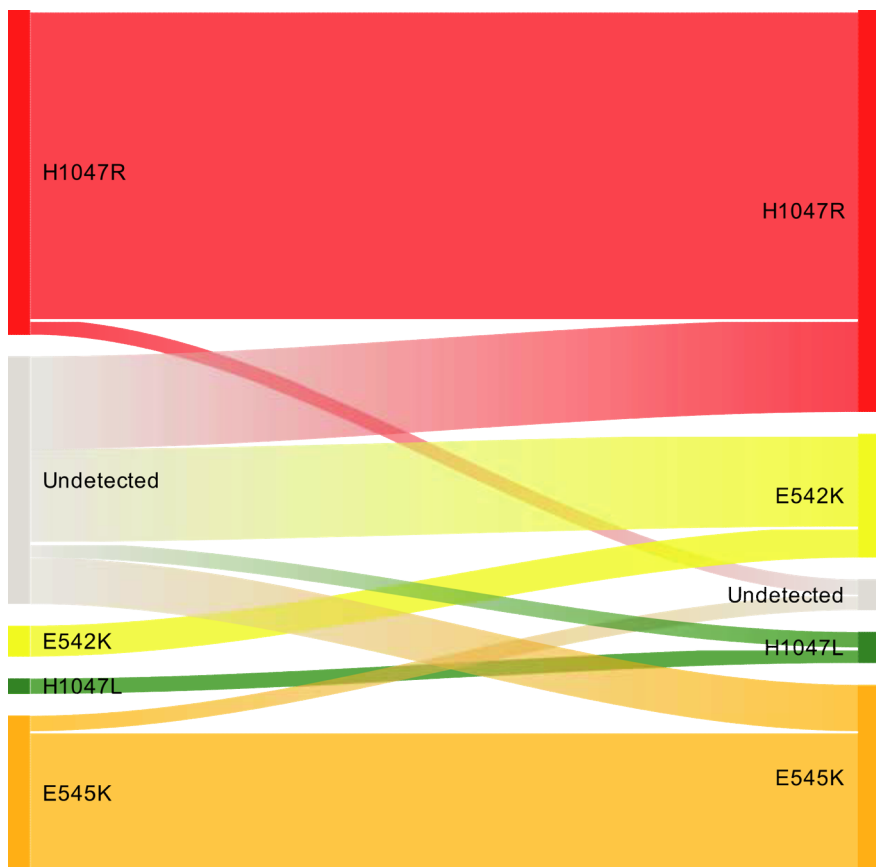
# Quale possibile applicazione?

Quale possibile applicazione?



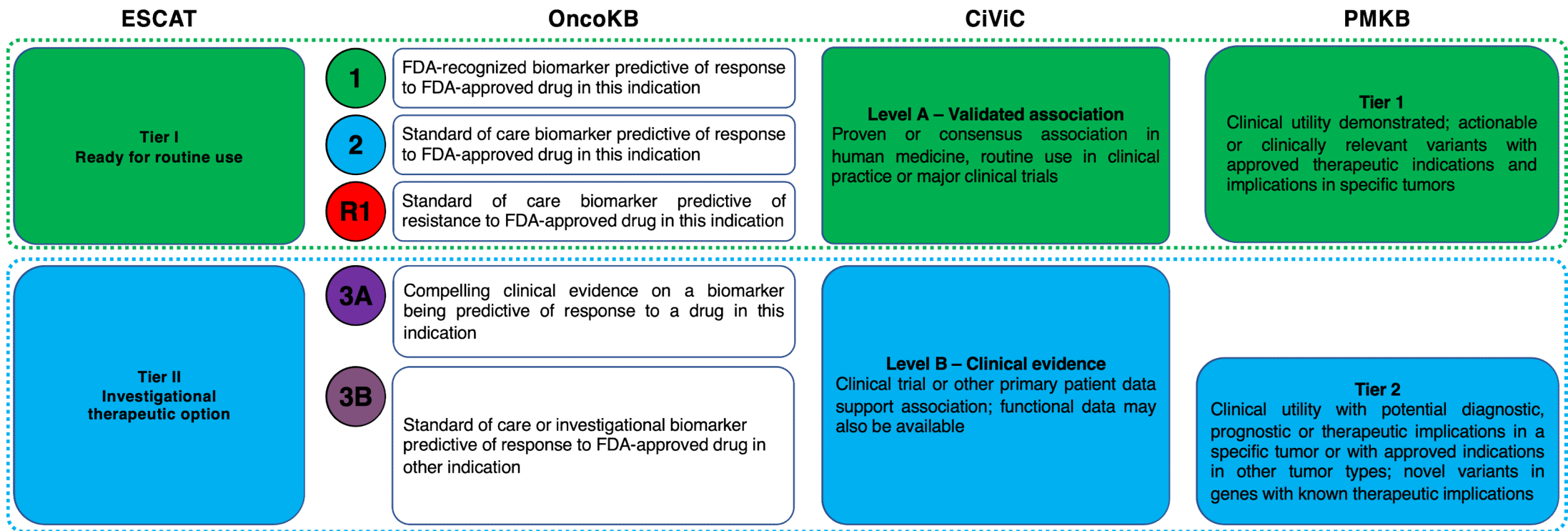
# Non tutte le mutazioni sono uguali

La solida scommessa (PIK3CA) ed il mutevole (ESR1)



# Non tutte le mutazioni sono uguali

Per ogni mutazione tante classificazioni

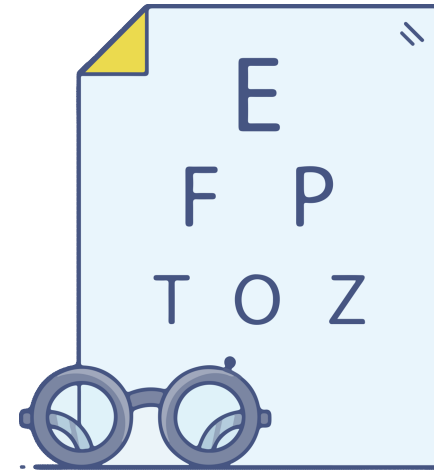




Ma possiamo spingerci **oltre**?



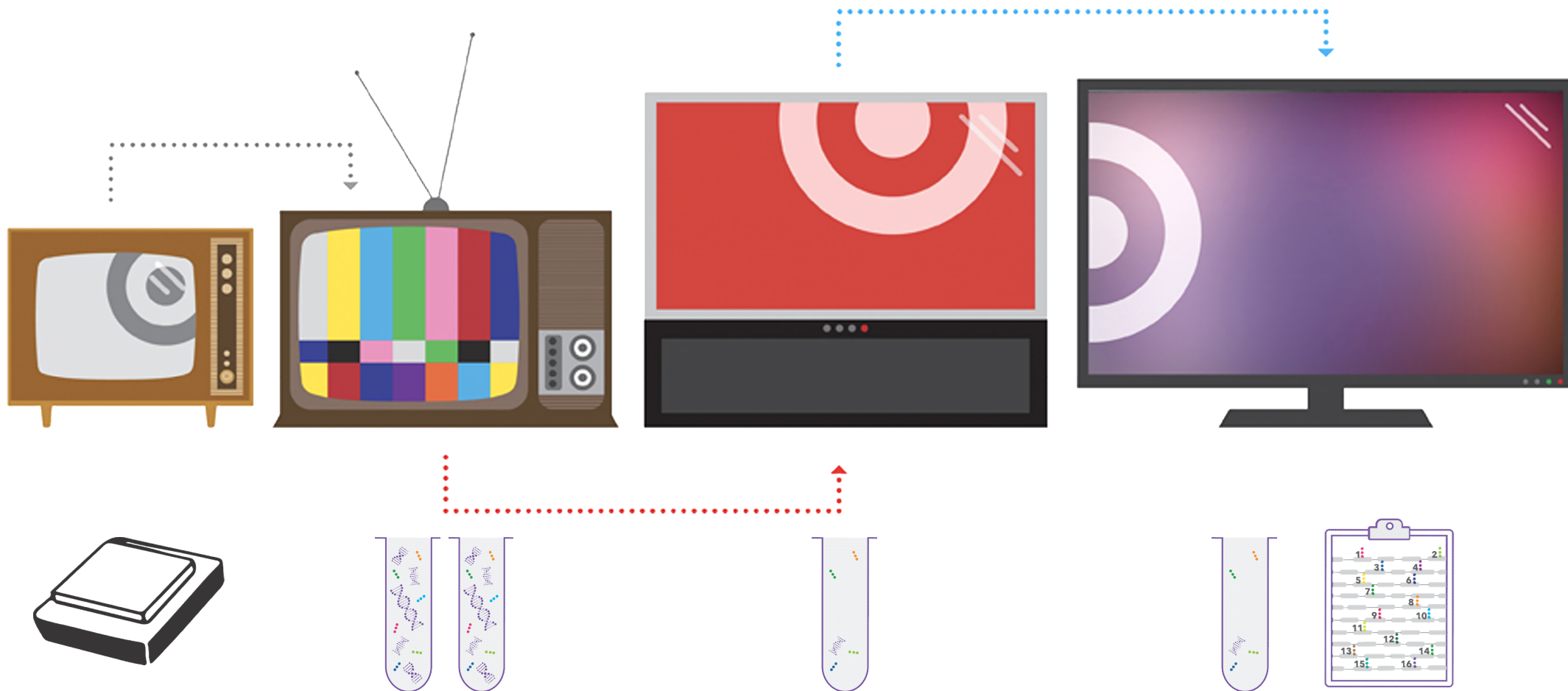
**Specificità**



**Sensibilità**

# Sensibilità

Quando la risoluzione è importante



# Specificità

Quel che vedi non è sempre quel che hai



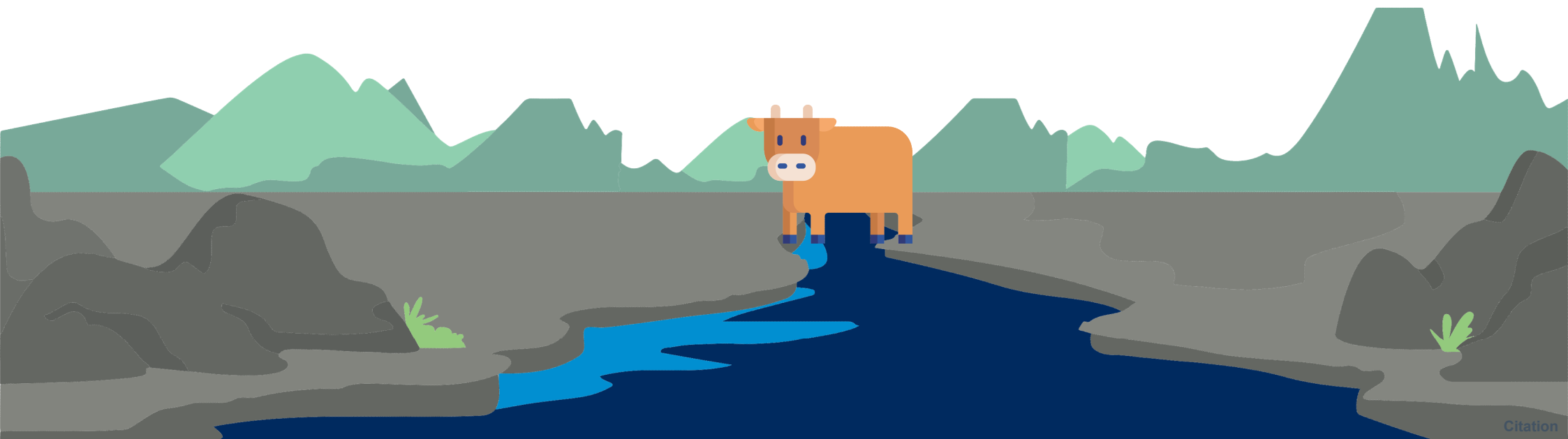
# Quel che vedi non è sempre quel che hai

Aspettando i cavalli sulla riva del fiume



# Quel che vedi non è sempre quel che hai

Aspettando le mucche sulla riva del fiume?



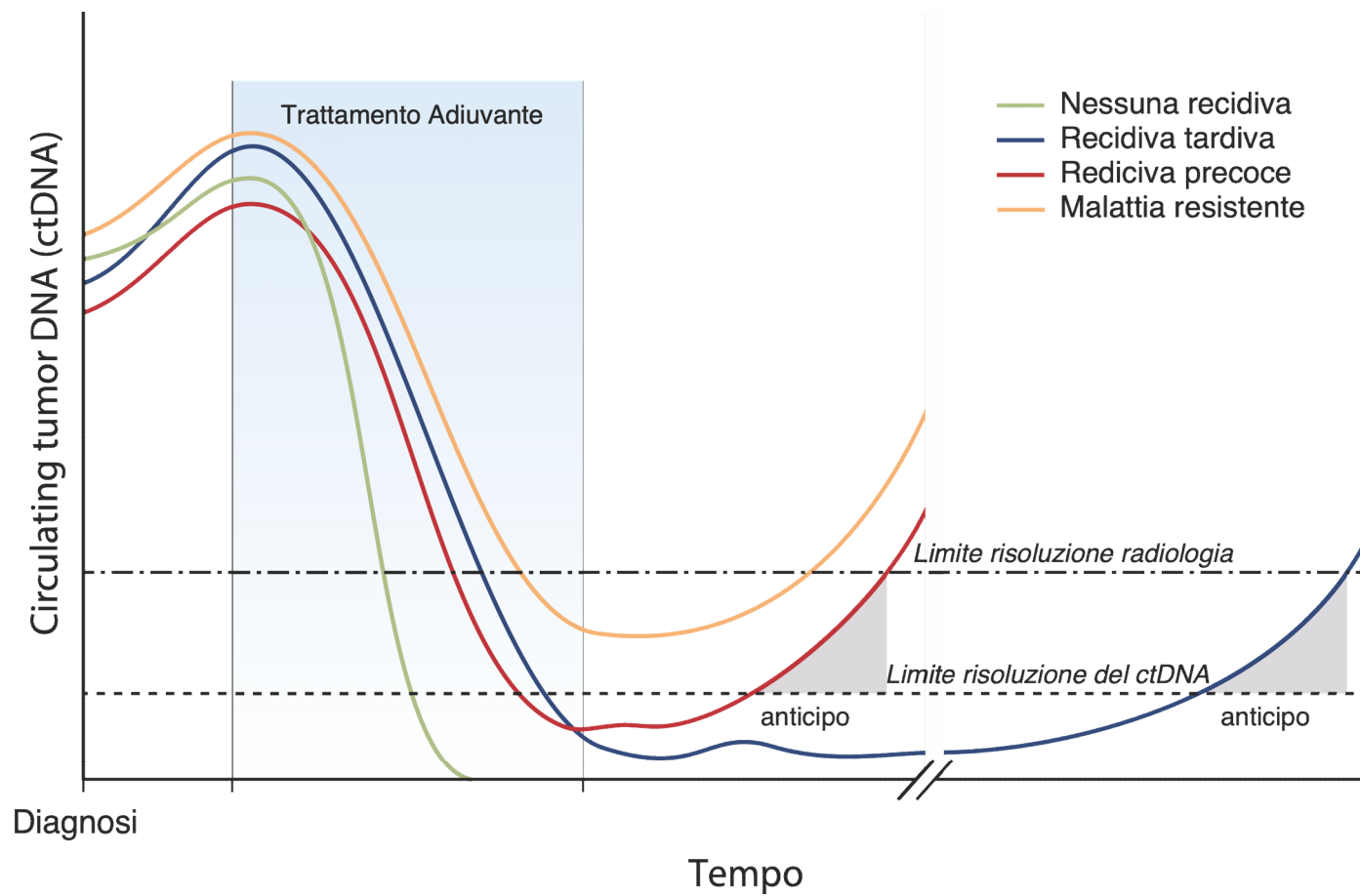
# Quel che vedi non è sempre quel che hai

Aspettando l'acquazzone sulla riva del fiume?



# La prospettiva futura

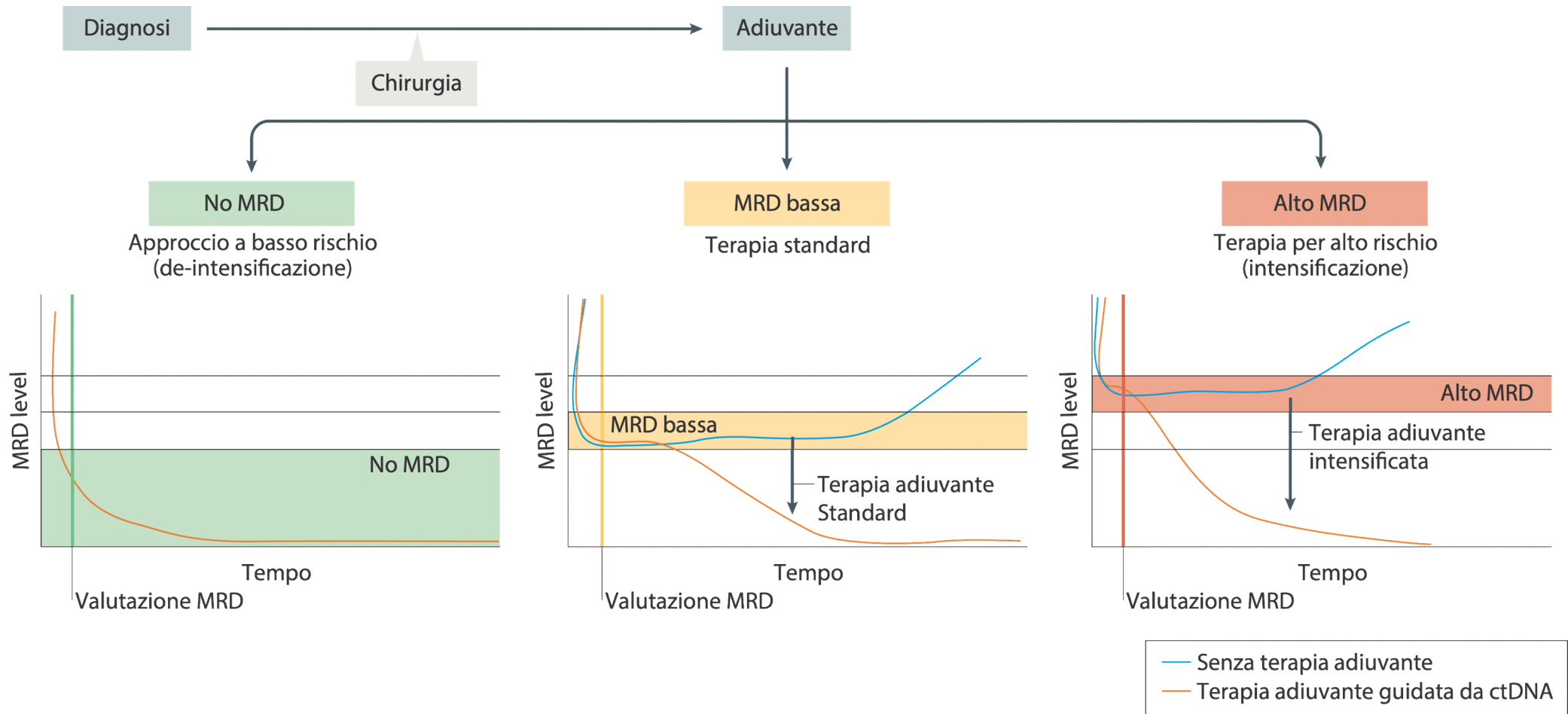
Monitorare e personalizzare sempre più precocemente





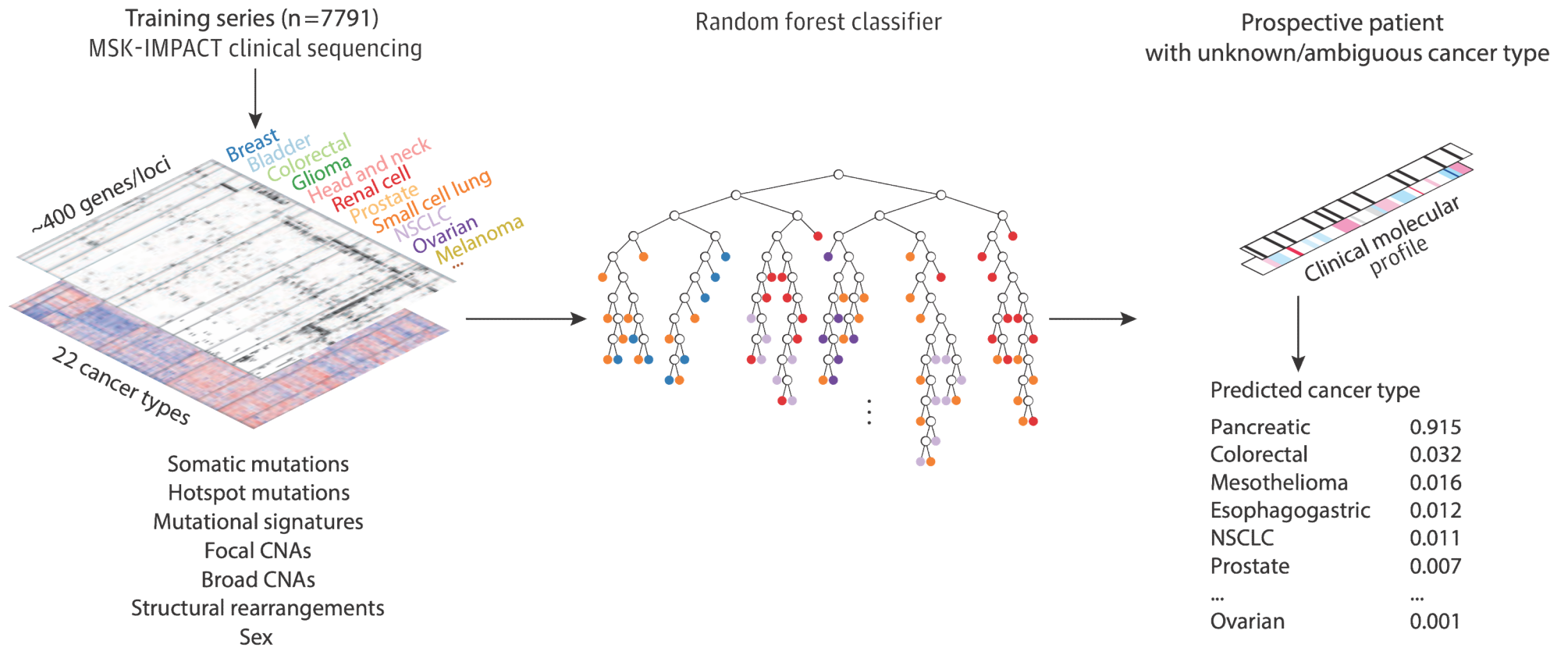
# La prospettiva futura

Monitorare e personalizzare sempre più precocemente



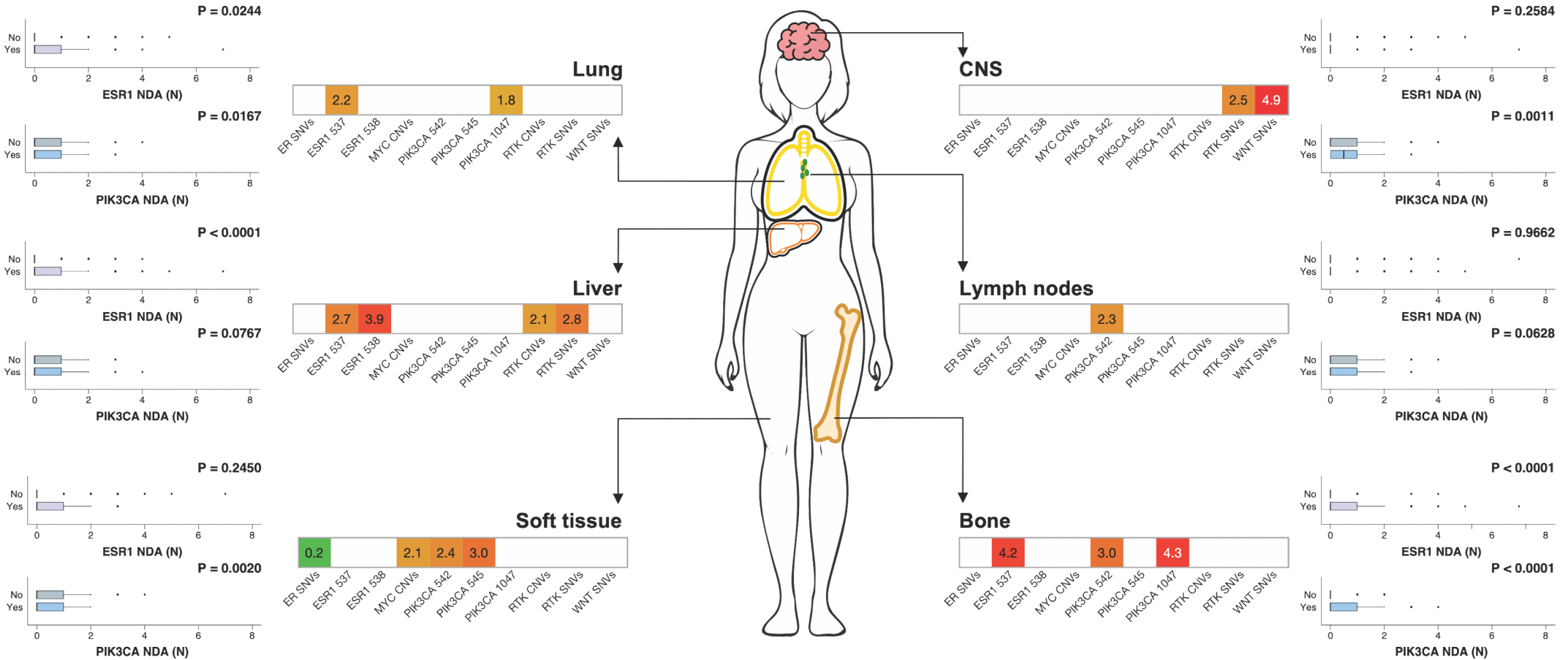
# Non tutte le mutazioni sono uguali

Aiutare la diagnostica nelle situazioni di primitivo sconosciuto



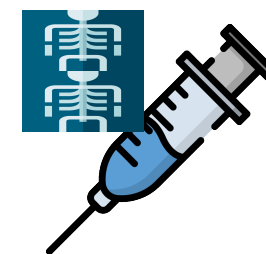
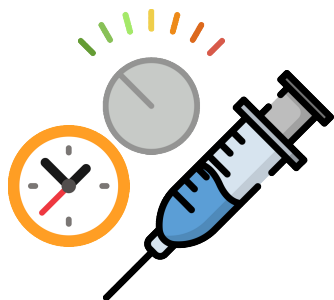
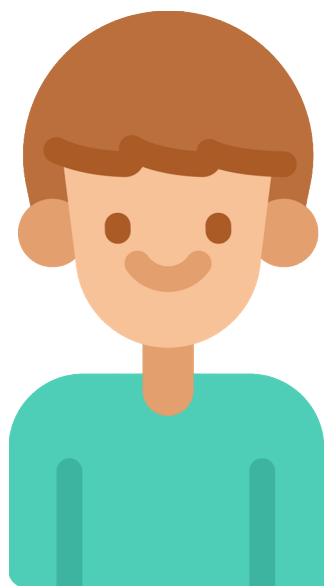
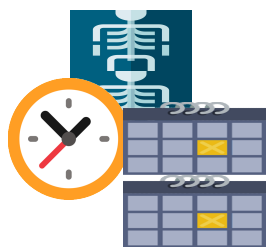
# Non tutte le mutazioni sono uguali

 Aiutare a stabilire rischio e sede di recidiva



# Torniamo all'inizio: perché la biopsia liquida?

Farmaci, esami, tempistiche e follow-up diversi



Non **solo** tecnologia

“ **scanxiety** nome  
scanxiety | da scan  
*plurale scanxieties*

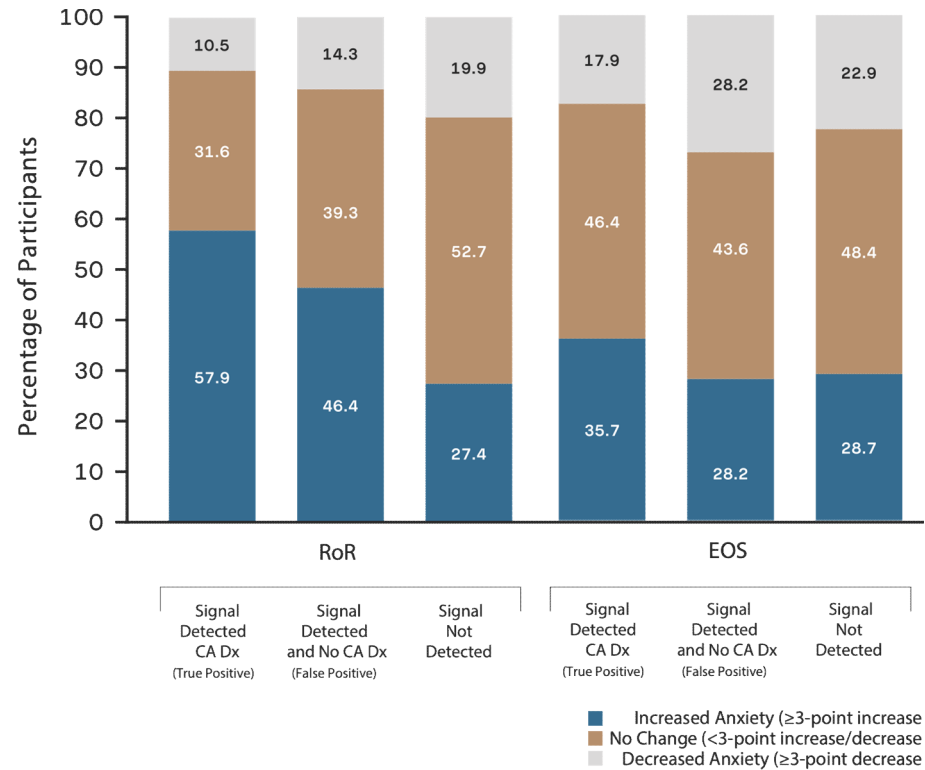
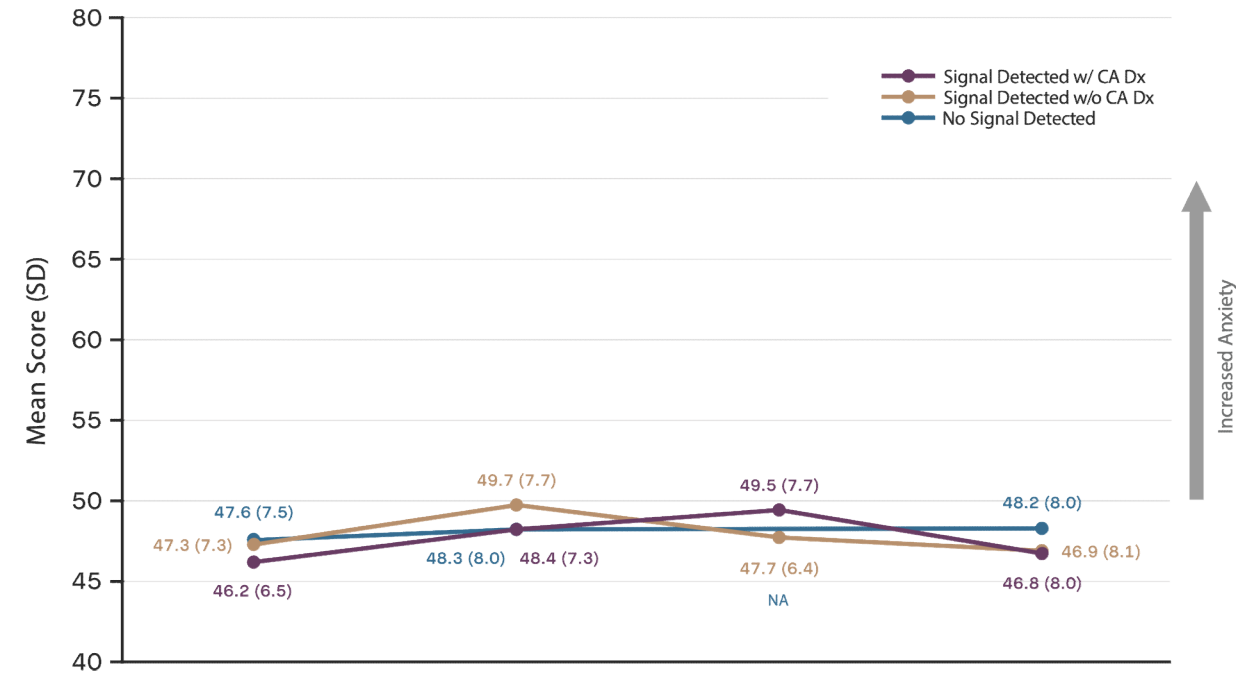
### **Definizione di *scanxiety***

1. disagio o nervosismo per una malattia imminente o in concomitanza di un test diagnostico legato al monitoraggio dei tumori.

”

















# L'importanza della survivorship anche nella diagnostica

Dietro ogni test c'è una persona



# L'importanza della survivorship anche nella diagnostica

L'impegno del tempo come nuova tipologia di tossicità

Trattamento ipotetico	Piano clinico	Sopravvivenza globale	Giorni a casa
Opzione A	         Approccio intensivo con visite e valutazioni frequenti	150	90
Opzione B	       Approccio meno intensivo con accessi limitati	120	115

Giorno 0      Giorno 30      Giorno 90      Giorno 180






Scan to **Link**

# Grazie



@ lorenzo.gerratana@uniud.it

 @LGerratana

 liquidbio.altervista.org

@ lorenzo.gerratana@cro.it

 @LGerratana@med-mastodon.com

 @gerratana

